

# Ayvens Car Monitor

## Monitoring of vehicles

Product leaflet



Better with every move.

 **ayvens**  
SOCIÉTÉ GÉNÉRALE GROUP



## Who is the system designed for?

- ▶ The Ayvens Car Monitor service is an important tool for fleet management as it provides an efficient mobility solution for companies of any size. It is, for example, used for monitoring the company cars of commercial companies, security services, health service providers and service organisations, courier companies, car rental companies and taxis, but also in many other sectors. Have a look which features the service offers and find out how it can help you make your business even more efficient...



## System functions



## System functionalities

### 1. Monitoring of vehicles

- ▶ generation of automatic trip logs
- ▶ online information about vehicle movement
- ▶ optimisation of bulk movement of vehicles

### 2. Security of vehicles in the Czech Republic

- ▶ sending text alarms (e.g. vehicle started without driver identification)
- ▶ vehicle tracking
- ▶ possibility of a backup power supply

### 3. Driver identification

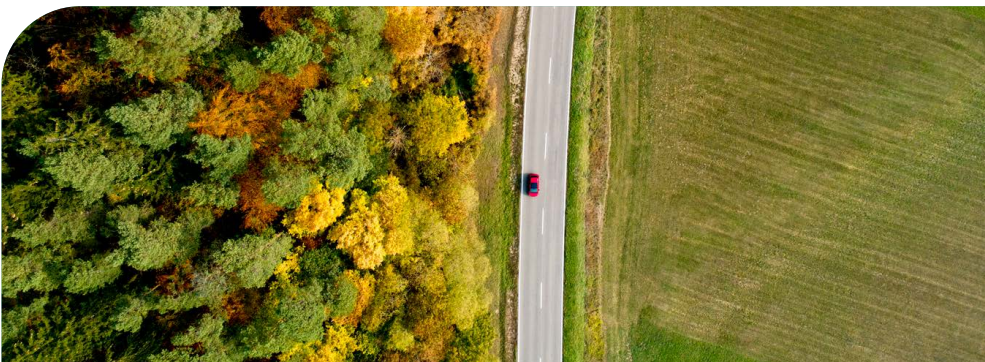
Authorised access to the app

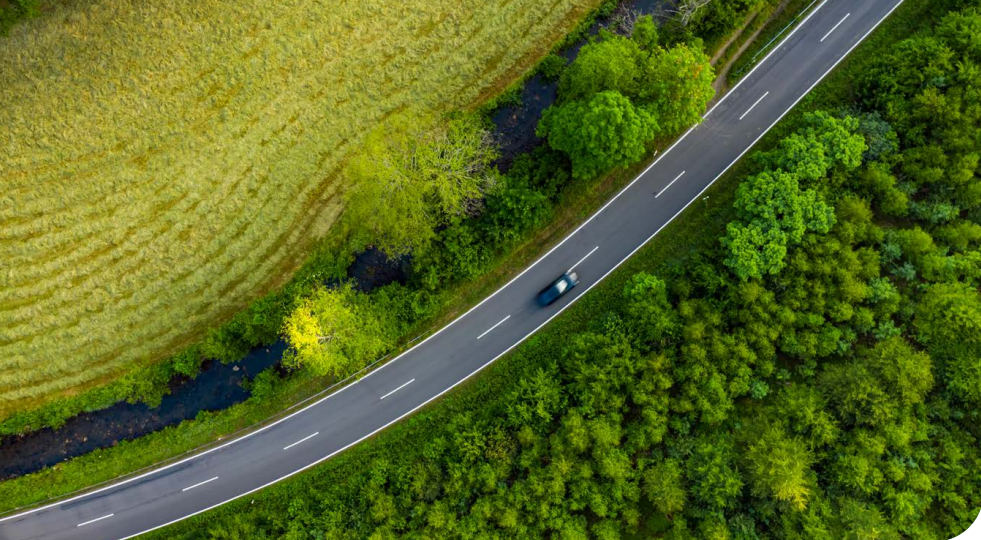
- ▶ access rights to vehicles and activities in the system

## Basic features

### 1. Automatic generation of a trip log from GPS data which is read

- ▶ the trip log meets all of the requirements determined by law
- ▶ option of editing the trip log while maintaining the original GPS data
- ▶ option of merging/splitting trips
- ▶ change of driver
- ▶ adding or presetting the purpose of the trip
- ▶ option of correcting the odometer status in vehicles where data cannot be read from the vehicle's CAN bus
- ▶ filtering of trip data by various criteria: vehicle, driver, period, vehicle type
- ▶ differentiation of business/private trips according to data from the vehicle or at a later date by editing the trip log
- ▶ export of the trip log to various document types (XLS, CSV, PDF)
- ▶ generating a travel order form from marked trips
- ▶ graphical representation of the altitude/speed profile of the route, performance graph
- ▶ detailed trip statements – passage through a specified location





## 2. Import of data on refuelling from various payment cards

- ▶ CCS, Shell, Orlen, Slovnaft, OMV...
- ▶ option of automatic online import of data from CCS cards

## 3. Statistical outputs

- ▶ number of trips, distances travelled, average consumption, time data
- ▶ option of calculating the price for business/private km
- ▶ various types of preset reports with the option of exporting, sending to e-mails or printing

## 4. Inserting custom user objects into the map

- ▶ various types of objects (customer, branch, icon, area)
- ▶ for objects, the option of defining the purpose of the trip, which is automatically added to the trip log if the vehicle stops near the object
- ▶ EV – the possibility to create your own location (point of interest) as a „charging point“ and define the charging price in it (e.g. charging at home or at work)

## 5. Fleet management

- ▶ records of all costs for operation of a vehicle
- ▶ planning of maintenance inspections, MOT, seasonal tyre change...
- ▶ vehicle battery voltage monitoring and low voltage notification option

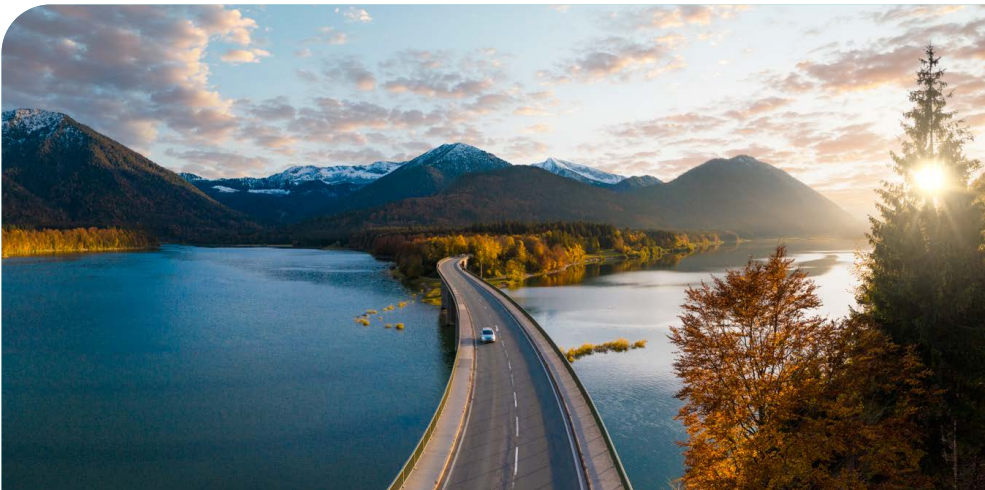
## Benefits of the system

By using Ayvens Car Monitor you save time and costs because you can:

- ▶ monitor use of company cars
- ▶ save fuel/reduce unauthorised trips
- ▶ correctly distinguish private trips made by employees
- ▶ use employee working hours more efficiently
- ▶ increase yields and productivity
- ▶ reduce administrative costs by automating processes
- ▶ use the mobile app (find the position of a vehicle, enter data, correct a trip type...)
- ▶ use the module with a vehicle or parking space reservation system
- ▶ remove inaccurate manual entries
- ▶ improve invoicing and customer service
- ▶ reduce excessive wear and tear on the vehicle
- ▶ improve driver behaviour on the road and towards the vehicle
- ▶ simplify calculation of travel allowances
- ▶ monitor fuel consumption per kilometre travelled
- ▶ obtain information about the movement history of a vehicle (time, position, speed, state of inputs)
- ▶ secure company assets/vehicles

## Benefits of the system

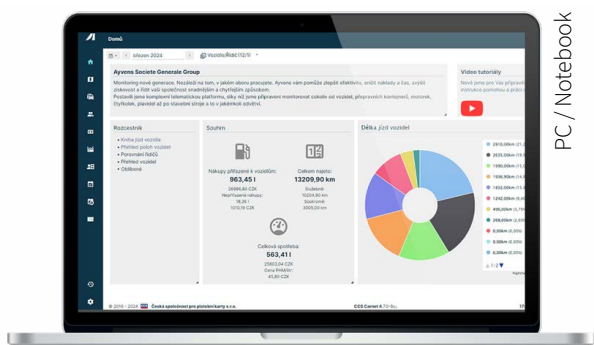
- ▶ usual return on investment approx. 3 months
- ▶ up to 30% reduction in vehicle operating costs
- ▶ up to 25% saving on fully comprehensive insurance





## Examples of the system

Simple operation from different types of devices PC/Notebook, tablet, smartphone



## Examples of the system PC

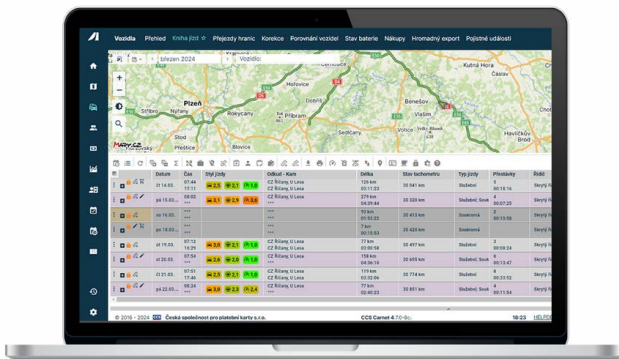
### ► Homepage

The look of the **homepage** can be **individually customised** – for example, you can display an overview of upcoming deadlines, current positions of selected vehicles, overviews of mileages or lengths of trips made in vehicles, news, historical information, reports and other information about your vehicles.



### ► Trip log

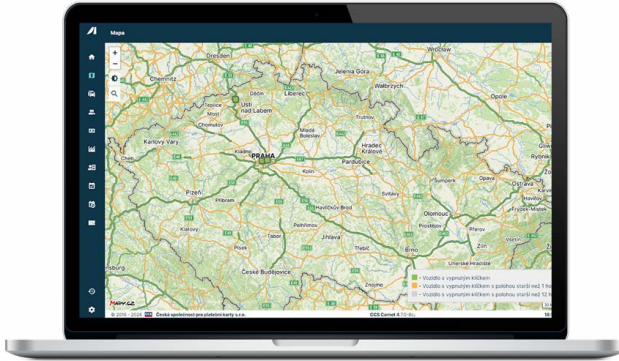
In the **trip log**, you can clearly display all of the important information about the movement of the monitored vehicle in any period of time, including summary statistics. **The trip log is entirely modular.** Each user (according to their permissions) can set which column they are interested in and the position in which it will be displayed. All of the important editing features, such as entering information about fuel, travel costs, type and purpose of a trip, are available at the click of a button. Colour-coding of trip types or highlighting of trips made outside of working days are also used for greater clarity.



## Examples of the system PC

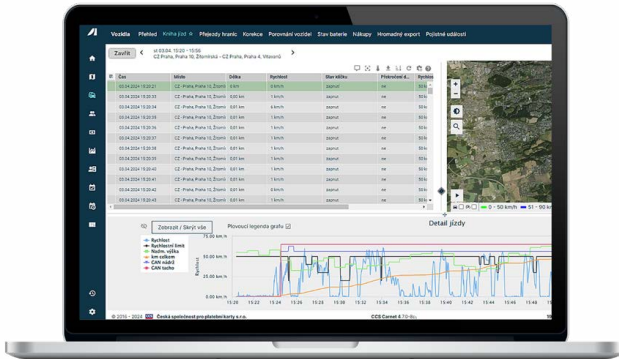
### ► Online monitoring

If you want to keep track of where your vehicles are at any given moment in time, use the **Map** tab in the system for **on-line monitoring**. This function allows you to display all or only selected vehicles on one map at the same time.



### ► Detailed route display

Plotting the trip/route on a conventional map is perhaps the most used view when checking vehicle activity. **You can view the route of one or more trips simultaneously** and easily switch between them. **Selected trips can be „played“ using the built-in trip player.** You can select the type of view (aerial, tourist or traffic map) to plot trips.

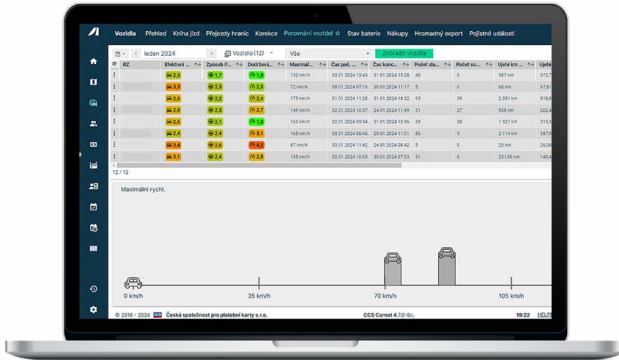




## Examples of the system PC

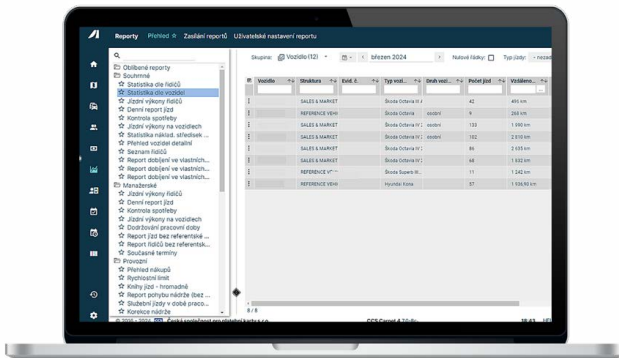
### ► Comparison of vehicles

Thanks to the variability of the system, you can easily and quickly compare specified vehicles or drivers or the entire fleet according to selected parameters. In this way, you can easily get a statistical or graphical overview of the behaviour of individual drivers in traffic, vehicle mileages and other information.



### ► Reporting

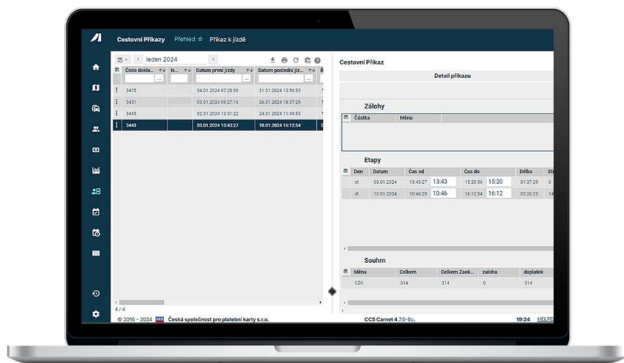
Reports and data outputs are one of the most important functions of each and every data application. Avvens Car Monitor makes working with reports simple and intuitive. You can also set up automatic sending of a report to one or more selected e-mail addresses on a selected date (day and time).



## Examples of the system PC

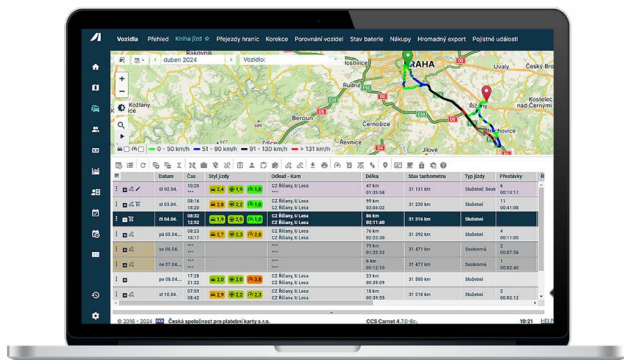
### ► Travel order (final billing for business trips)

With a **Trip log** automatically created by the system, you can easily generate a **Travel order** with just a few clicks. The Carnet system will calculate the appropriate reimbursements according to the applicable legislation for both domestic and foreign trips, including reduction of meal allowances and addition of other expenses, etc. It is also possible to calculate the level of reimbursement for business trips made by train, bus or plane.



### ► CAN – fuel consumption

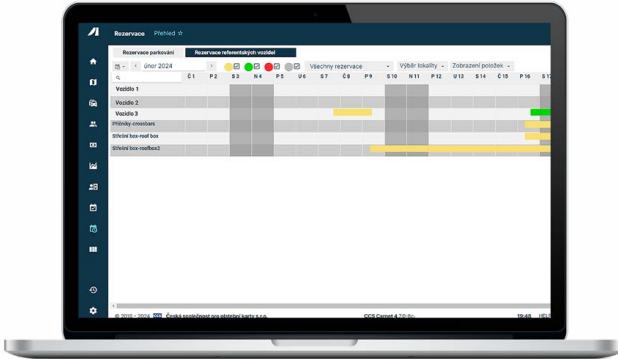
The GPS unit can be connected to the CAN data bus found in passenger cars, allowing you to download and then transmit **the current fuel level and the current vehicle odometer status directly to the system**. Thanks to this data, Carnet is able to accurately calculate the vehicle's fuel consumption. Data can be downloaded from the CAN bus in approximately 90% of vehicles commonly used as company cars. The equivalent of the CAN bus for lorries and vans is the FMS bus – this is standardised and is the same for all manufacturers. We offer both contact and contactless connections to both buses.



## Examples of the system PC

### ► Reservation of vehicles and parking spaces

This is an additional module of the Carnet system, which **makes it very easy for you to keep a clear record of shared vehicles in individual branches and across the entire company.** In view of the increasing shortage of free parking spaces, we also offer a module **which allows you to reserve free shared and temporarily vacant private parking spaces within your company in such a way that they can be used as efficiently as possible by your employees.** Modules can be ordered for a fee of a few CZK/vehicle/month.





**Welcome to Ayvens Car Monitor!**

If **you are a user** of this service, you can **log in to the application** here: <https://ayvens.carnet.cz>.

If **you are considering use of this service**, you can have a look at a **demo version** at <https://ayvens.carnet.cz/home>.

**Would you like to be a new user of** Ayvens Car Monitor?

**Contact your dealer!**

We wish you many happy and safe kilometers with our cars and service Ayvens Car Monitor!



Ayvens Call Centre (Mon–Fri: 9 a.m.–5 a.m.):  
**+420 955 525 000**



E-mail for queries: [infocz@ayvens.com](mailto:infocz@ayvens.com)  
Website: [www.ayvens.cz](http://www.ayvens.cz)