

# Return inspection for commercial vehicles - Guide



Better with every move.

 **ayvens**  
SOCIÉTÉ GÉNÉRALE GROUP

## Contents

Return inspection for commercial vehicles .....	3
During the return inspection, the inspector will .....	3
Example images .....	4
Tyres and rims .....	5
Acceptable damages to tyres and rims.....	5
Unacceptable damages to tyres and rims .....	5
Car body and paint surface .....	7
Acceptable damages to the car body and paint surface .....	7
Unacceptable damages to the car body and paint surface.....	9
Car bumpers .....	13
Acceptable damages to the car bumper.....	13
Unacceptable damages to the car bumper .....	14
Windows and sealed beams .....	17
Acceptable damages to the windows and the sealed beams .....	17
Unacceptable damages to the windows and the sealed beams.....	17
Interior .....	20
Acceptable damages to the interior.....	20
Unacceptable damages to the interior .....	21
Side mirrors.....	23
Acceptable damages to the side mirrors.....	23
Unacceptable damages to the side mirrors .....	23
Trunk and bed .....	24
Acceptable damages to the trunk and bed .....	24
Unacceptable damages to the trunk and bed.....	24
Marks left by removed accessories.....	25
Acceptable damages from the marks left by removed accessories .....	25
Unacceptable damages from the marks left by removed accessories .....	25
Unreturned accessories .....	25
Unacceptable defect.....	25



# Return inspection for commercial vehicles

All good things come to an end, and so does your journey together with your leasing car. We collected together the instructions for returning the car.

Here at Ayvens, all returning leasing cars go through the return inspection. The inspection is carried out by an independent outside company. The return inspection is done to all cars according to the same process.

## During the return inspection, the inspector will

- Inspect the car, inside and out
- Photograph the car
- Document the inspection
- Record all things that may need repairs
- Give a preliminary assessment on the repair costs
- Gives guidance on filling in the damage report, when required

If repair needs are found during the inspection, they will be done cost-effectively, with regard to the age and mileage of the car. For example, small dents are smoothed out with methods that do not break the paint surface.

The return inspection is documented and damages are photographed. The return inspection form on the inspection carried out, showing all potential defects and damages, will be sent to the customer by email within about one week. However, it is possible to review the inspection on-site, in which case the return inspection form is given to the customer straight away.



## Example images

You can familiarize yourself with the return inspection criteria with these example images. The images are only indicative.

- [See images of tyres and rims](#)
- [See images of car body and paint surfaces](#)
- [See images of car bumpers](#)
- [See images of windows and sealed beams](#)
- [See images of side mirrors](#)
- [See images of interiors](#)
- [See images of trunk and bed](#)
- [See images of marks left by removed accessories](#)
- [Unreturned accessories](#)



# Tyres and rims

## Acceptable damages to tyres and rims

- A single scratch on a rim or hubcap, max 20 cm in length
- Minor abrasion marks
- Damaged varnish or paint surface



## Unacceptable damages to tyres and rims

- Several scratches on rims or hubcaps
- A large scratch, over 20 cm in length
- Rim deformations
- Wrong set of rims
- Wrong set of tyres
- Damaged tyres





# Car body and paint surface

## Acceptable damages to the car body and paint surface

- Small impact marks from stones in the nose area
- Scratches and abrasion marks around the door handle
- Faded paintwork
- Abrasion marks on the paint surface caused by carwash
- A single scratch on the paint surface, max 10 cm
- Individual dents with a diameter of less than 5 cm without damage to the paint surface

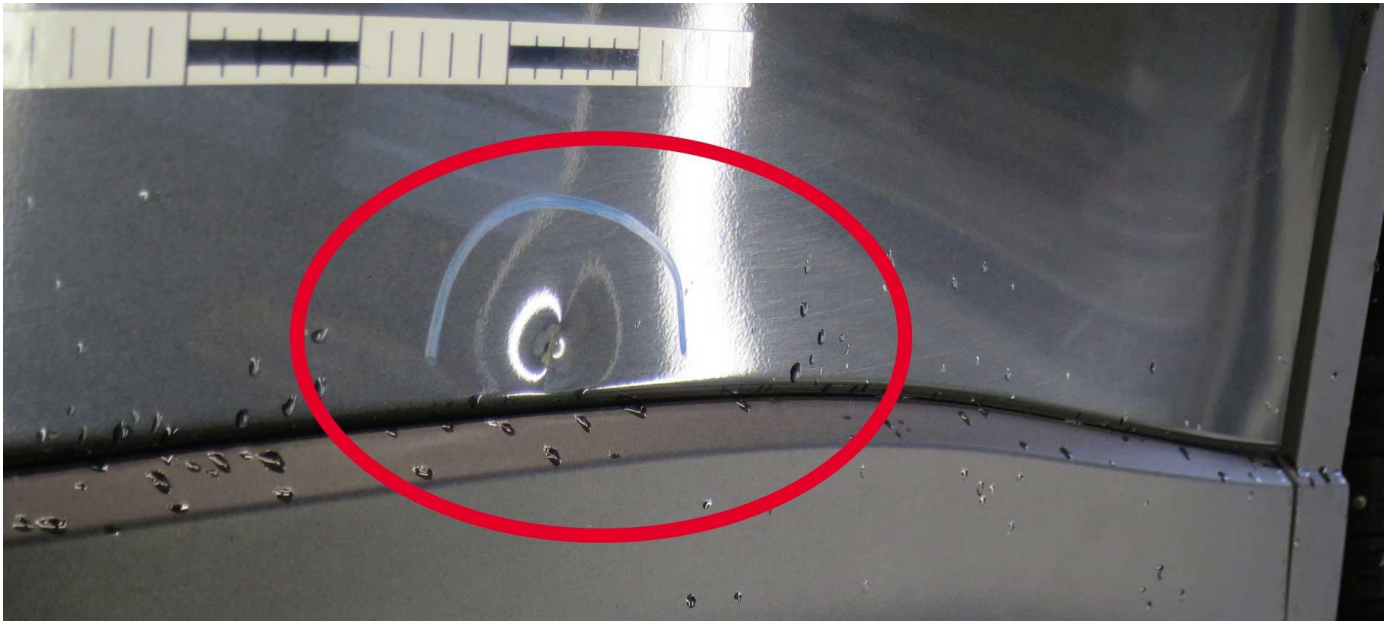






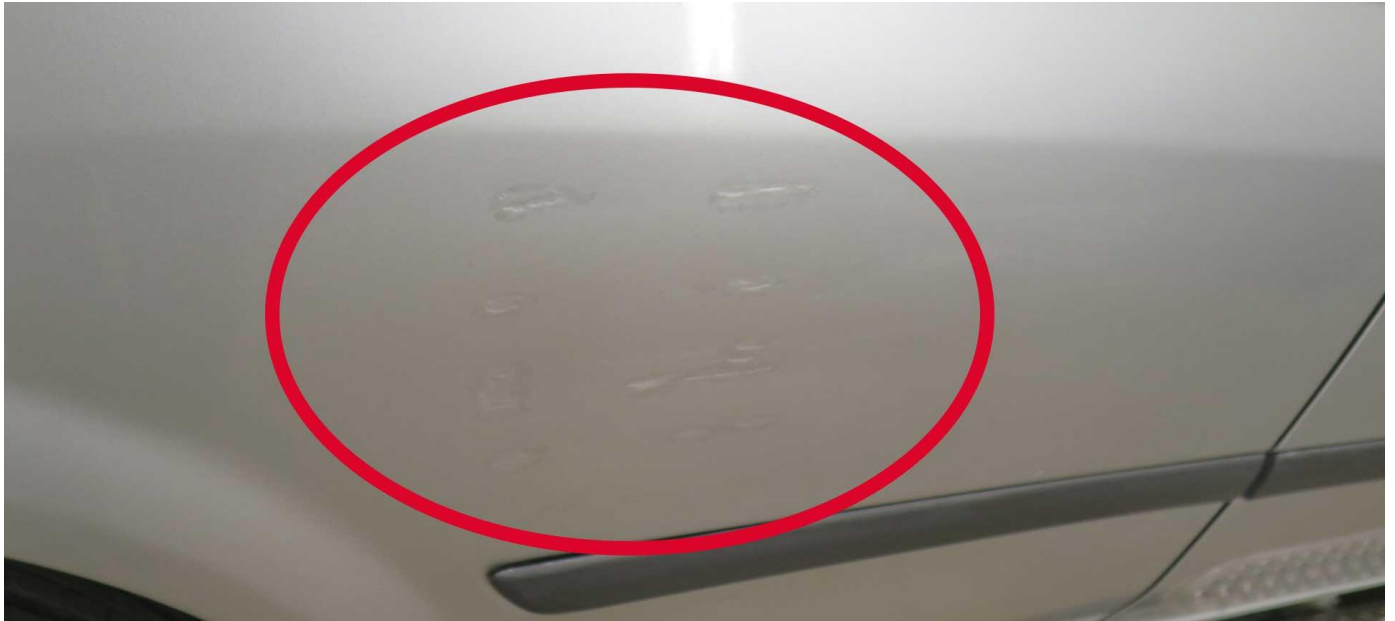
## Unacceptable damages to the car body and paint surface

- Dents with a diameter of over 5 cm without damage to the paint surface and with damages to the paint surface
- Unrepaired collision damages
- Broken mirrors
- Damages to the paint surface that require painting over
- A single scratch on the paint surface, more than 10 cm in length
- Removal of adhesive tapes and stickers
- Damages caused by roof racks
- Rust damages caused by dents and cracks









# Car bumpers

## Acceptable damages to the car bumper

- Small scratches on the bumpers or trims, with no deformation
- Small scratches on door edges
- Small cracks on the bumpers max 5 cm





## Unacceptable damages to the car bumper

- Noticeable scratches on the bumpers or trims
- Over 5 cm cracks in the bumpers
- Deformations





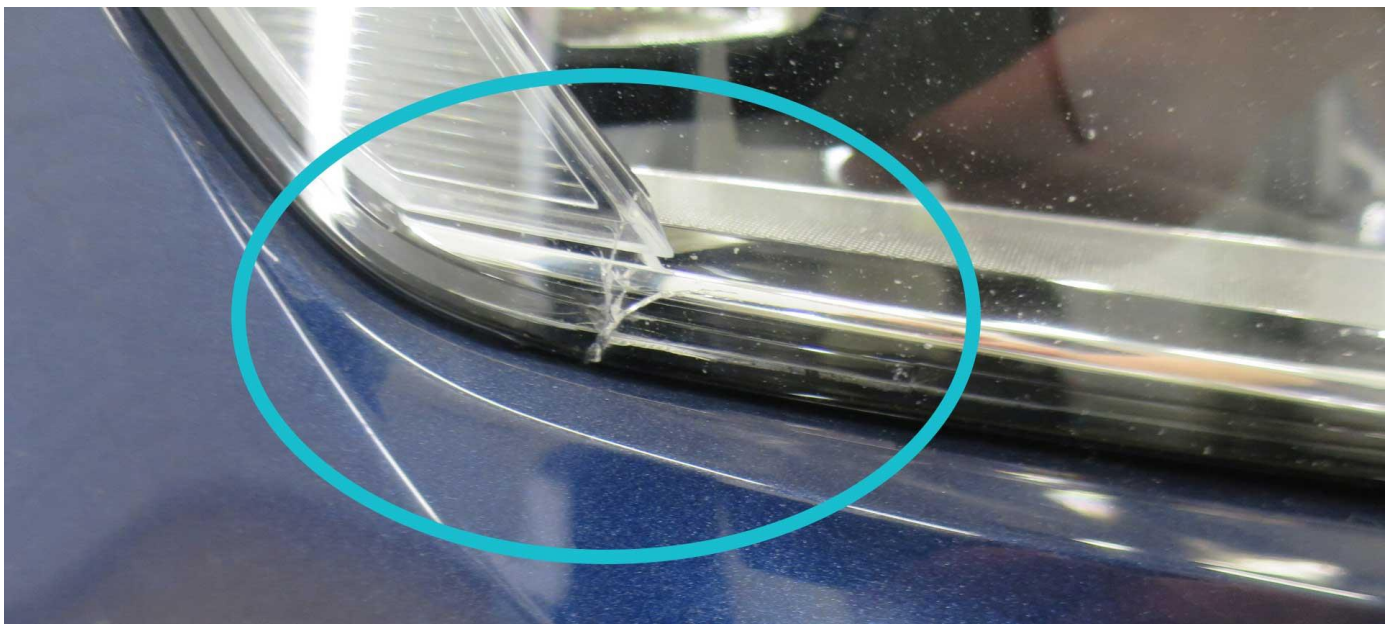




# Windows and sealed beams

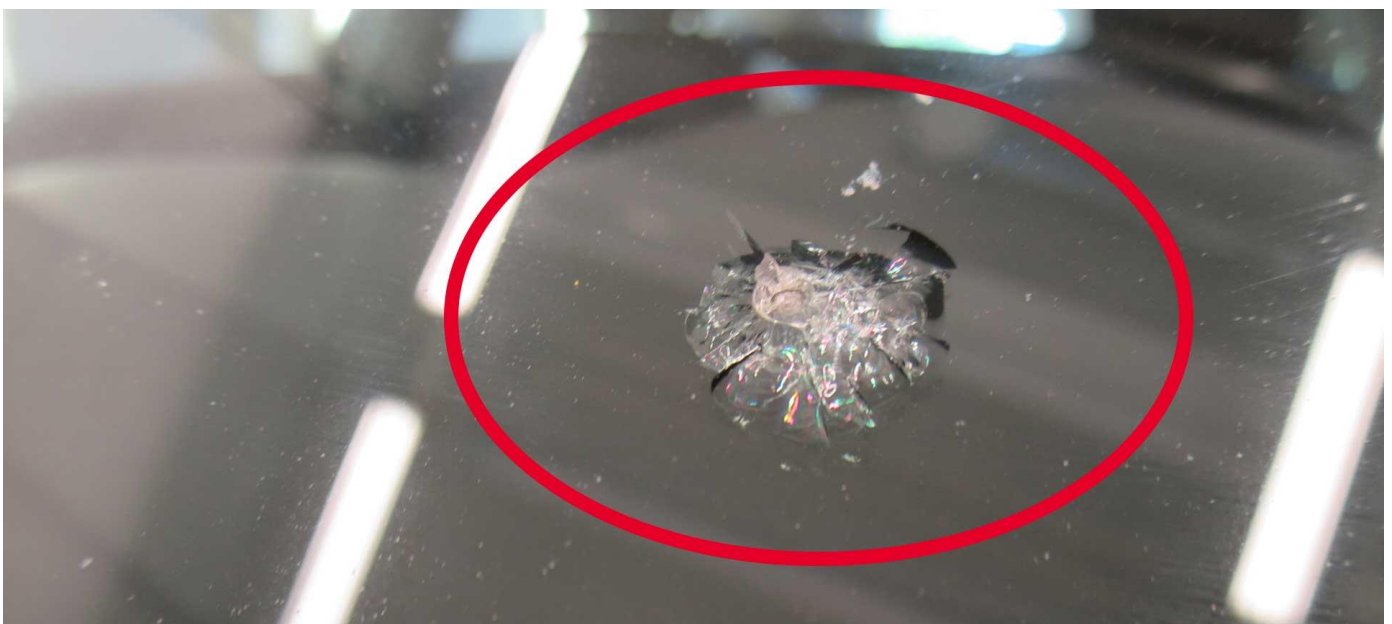
## Acceptable damages to the windows and the sealed beams

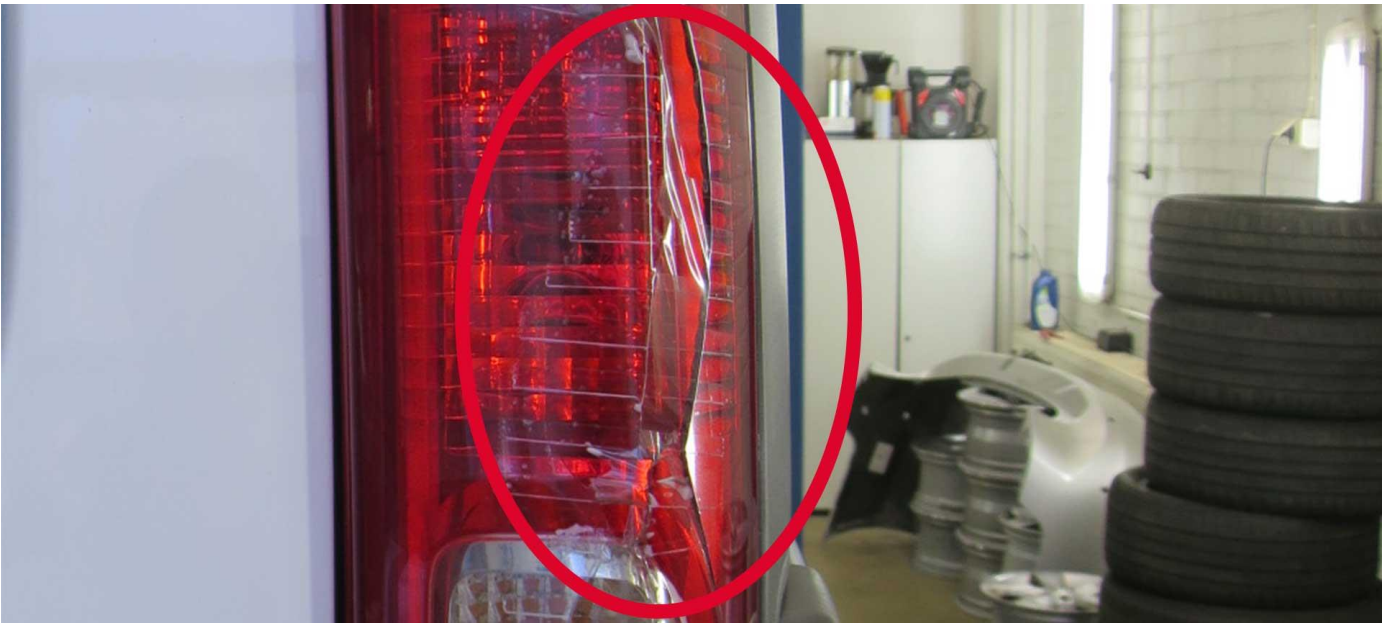
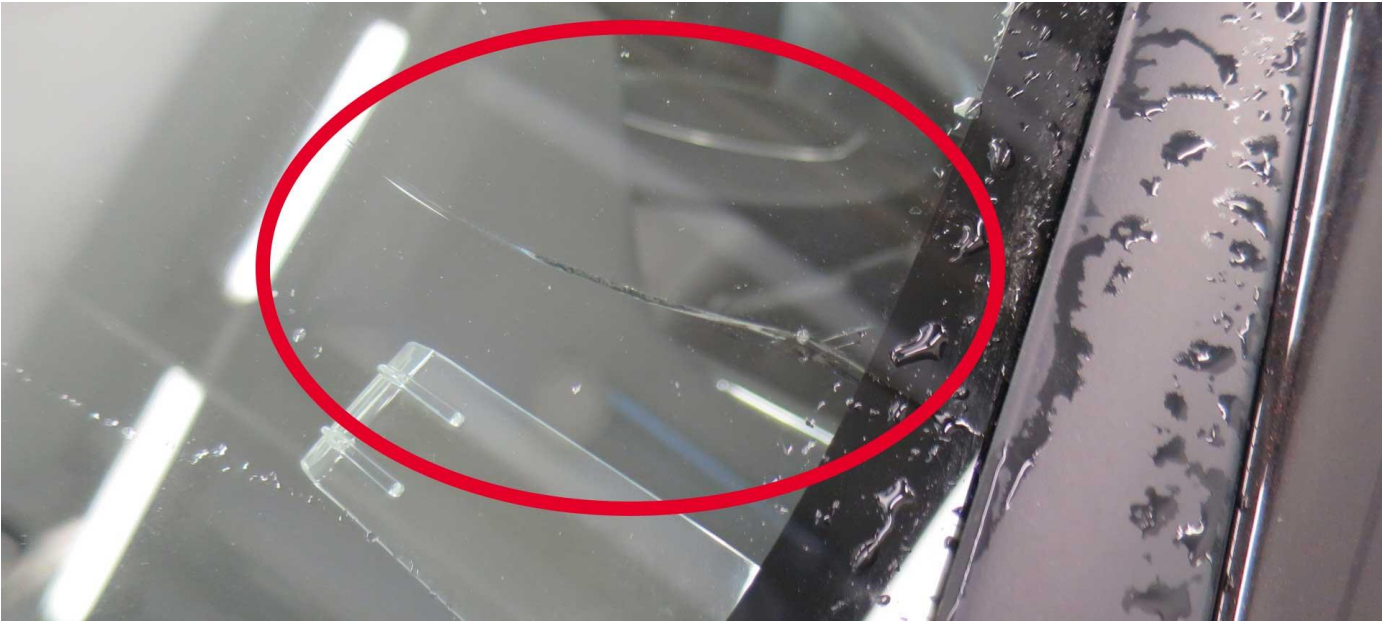
- Scratches on the sealed beams
- Small stone indentation marks on the windshield with no crack
- Small cracks on rear lights max 2 cm



## Unacceptable damages to the windows and the sealed beams

- Cracks in the sealed beams
- Broken sealed beams
- Cracks on rear lights over 2 cm or parts missing
- Cracks and “bulls-eyes” on the windshield and other windows





# Interior

## Acceptable damages to the interior

- Fading
- Abrasion marks
- Normal soiling

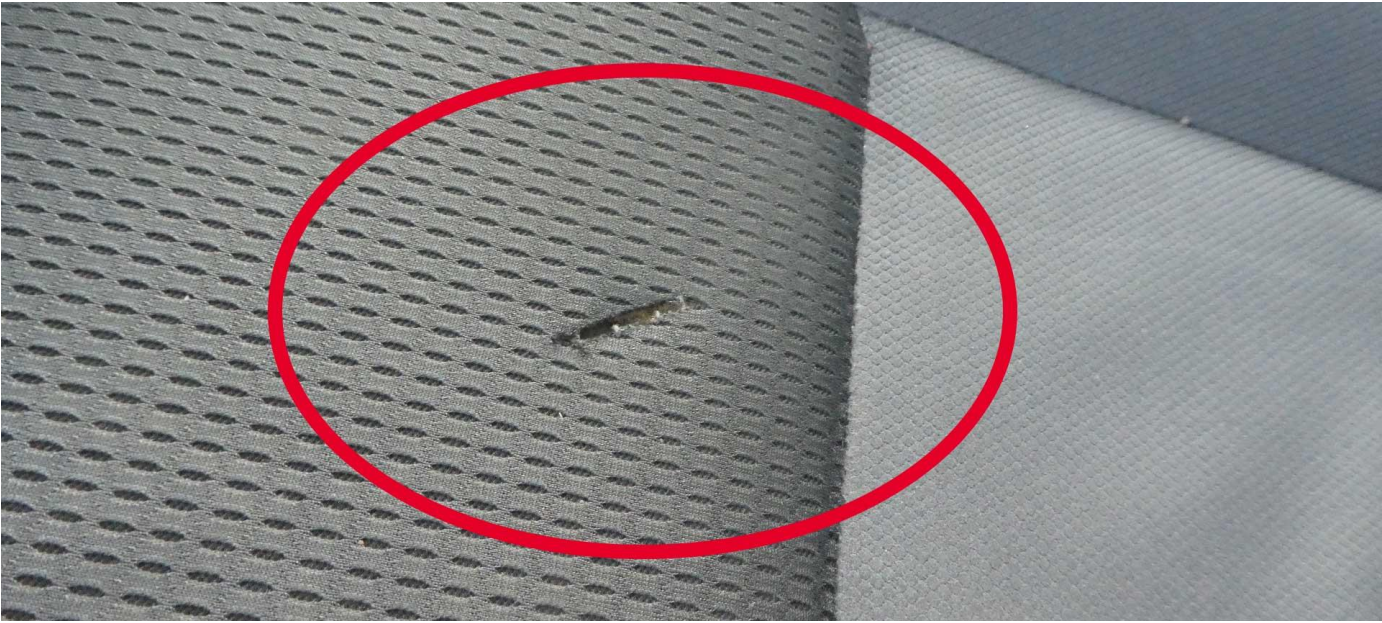




## Unacceptable damages to the interior

- Stains that are difficult to remove
- Holes and tears
- Dirt and smells that are difficult to remove
- Animal hairs





# Side mirrors

## Acceptable damages to the side mirrors

- Small scratches in the side mirrors and mirror cases



## Unacceptable damages to the side mirrors

- Cracks in the side mirrors and mirror cases
- Broken side mirrors and mirror cases, pieces missing



# Trunk and bed

## Acceptable damages to the trunk and bed

- Scratches and minor cracks in paneling
- Scratches in wheel covers
- Scratches in dividers

## Unacceptable damages to the trunk and bed

- Over 10 cm holes and cracks in paneling
- Dents in wheel covers
- Cracks and dents in dividers
- Damages that prevent the use of bed and external structures





# Marks left by removed accessories

## Acceptable damages from the marks left by removed accessories

- A small hole left by the removing of an accessory, a non-visible screw hole

## Unacceptable damages from the marks left by removed accessories

- A change caused by the removal of an accessory, that cannot be returned to the original stage
- A screw hole caused by the removal of an accessory, that is visible and cannot be covered

# Unreturned accessories

## Unacceptable defect

- Other set of tyres
- Possible other set of bolts and lock bolts
- Hubcaps
- Cable for the cylinder block heater
- Tools
- Spare keys
- Service book
- User manuals





Ayvens  
PL 194, Ohtolankatu 4  
01511 Vantaa, Finland

Tel : 010 40 400  
[www.ayvens.fi](http://www.ayvens.fi)

Axus Finland Oy  
Company ID: 0643850-5  
City: Vantaa

 **ayvens**  
SOCIETE GENERALE GROUP